

1 2 3 4 5 6 7 8

REV	LOCATIONS	DESCRIPTION	DATE	REVISER	APPD
1	△	Structure of Housing change	08/MAR/23	MATT	KATE

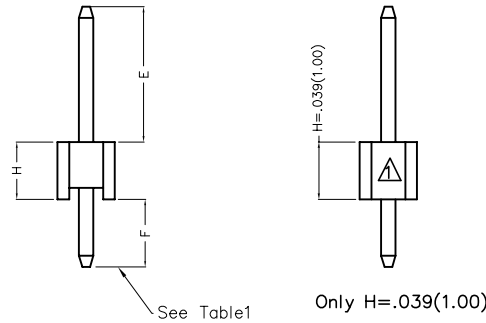
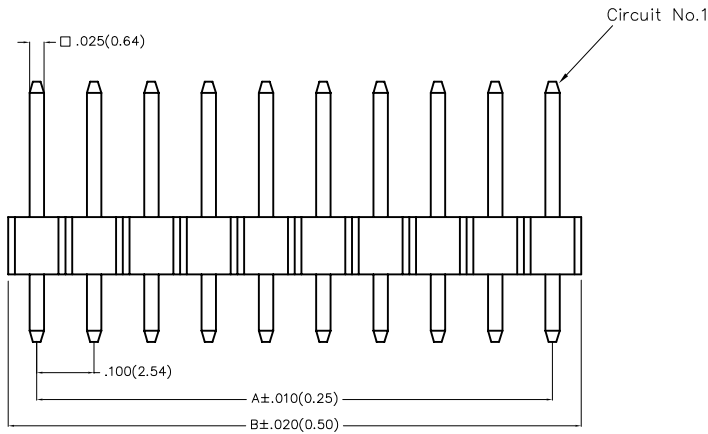
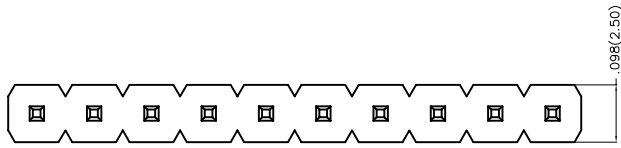
SPECIFICATIONS

Electrical

Current Rating: 3.0A AC(rms)/DC
 Voltage Rating: 250V AC(rms)/DC
 Contact Resistance: 20 mΩ Max
 Insulation Resistance: 1000 MΩ Min
 Withstanding Voltage: 600V AC r.m.s
 Temperature Range—Operating: -40°C~+105°C

Material

Housing: Glass Filled Polyester (UL 94V-0), Color: Black
 Pin: Brass
 Pin Plating: Gold plated/ Selective gold in contact area, tin on tail

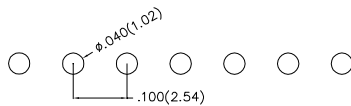


Ordering Information


FPH 254 01 — S XX S X XX X XX B
 1 2 3 4 5 6 7 8 9 10 11

1 Category FPH—Pin Header
 2 Series Number 254—Pitch2.54mm
 3 Distinction No. 01
 4 Row Option S—Single Row
 5 Circuits XX
 6 Entry Angle S—180° Vertical

7 Plating 1—Gold plated
 3—Selective gold in contact area, tin on tail
 8 Thickness of Plating 01—1μ"
 15—15μ"
 Custom plate available
 9 Material—Resin 1—PBT
 4—PA6T
 5—PA9T
 10 Size 01,02... —Serial number
 (See Table1)
 Custom length available
 11 Packaging B—PE Bag



Recommended P.C.Board Layout

THIRD ANGLE PROJECTION	GENERAL TOLERANCES (UNLESS SPECIFIED)		APPROVE BY	DATE	PART NO.	ITEM NO.	 Leader Of Industry
	X.±.012(0.30)	.X'±5'	FRANK	25/JUN/13	FPH25401—SXXSXXXXXXB	FPH25401	
DESIGN UNITS Inch (metric)	X.X±.008(0.20)	.X'±2'	CHECKED BY	DATE	TITLE	REV 1	SHEET NO. 1/5
SCALE 5:1	X.XX±.006(0.15)	.XX'±1'	CHERRY	25/JUN/13	Board to Board(Pin Header) Pitch 2.54mm 180° Vertical(DIP)	THIS DRAWING CONTAINS INFORMATION THAT IS PROPRIETARY TO TXGA INDUSTRIAL ELECTRONICS(S.Z)CO.,LTD AND SHOULD NOT BE USED WITHOUT WRITTEN PERMISSION	
	X.XXX±.004(0.10)	.XXX'±0.5'	DRAWN BY	DATE			
			JACOB	25/JUN/13			

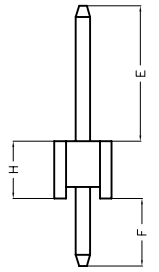
1 2 3 4 5 6 7 8

REV	LOCATIONS	DESCRIPTION	DATE	REVISER	APPD

Table1

Serial number	Dimensions(in/mm)			Canceled Circuits	Note
	E	F	H		
01	.236(6.00)	.118(3.00)	.098(2.50)	—	
02	.539(13.70)	.102(2.60)	.098(2.50)	—	
03	.512(13.00)	.118(3.00)	.098(2.50)	—	
04	.118(3.00)	.118(3.00)	.098(2.50)	—	
05	.232(5.90)	.124(3.40)	.098(2.50)	—	
06	.315(8.00)	.256(2.50)	.098(2.50)	—	
07	.374(9.50)	.118(3.00)	.098(2.50)	—	
08	.689(17.50)	.118(3.00)	.098(2.50)	—	
09	.295(7.50)	.130(3.30)	.098(2.50)	—	
10	.217(5.50)	.134(3.40)	.098(2.50)	—	
11	.447(11.35)	.118(3.00)	.098(2.50)	—	
12	.315(8.00)	.118(3.00)	.098(2.50)	—	
13	.787(20.0)	.118(3.00)	.098(2.50)	—	
14	.787(20.0)	.118(3.00)	.098(2.50)	No.2	Only 3Circuits
15	.472(12.00)	.118(3.00)	.098(2.50)	—	
16	.335(8.50)	.394(10.00)	.098(2.50)	—	
17	.236(6.00)	.118(3.00)	.079(2.00)	—	
18	.236(6.00)	.118(3.00)	.098(2.50)	No.5,6	Only 8Circuits
19	.224(5.70)	.118(3.00)	.098(2.50)	—	
20	.230(5.85)	.100(2.54)	.100(2.54)	—	
21	.236(6.00)	.118(3.00)	.098(2.50)	No.3,6,9,12,17	Only 22Circuits
22	.295(7.50)	.118(3.00)	.098(2.50)	—	
23	.157(4.00)	.118(3.00)	.098(2.50)	—	
24	.664(16.86)	.098(2.50)	.100(2.54)	—	
25	.243(6.16)	.118(3.00)	.100(2.54)	—	

Serial number	Dimensions(in/mm)			Canceled Circuits	Note
	E	F	H		
26	.159(4.05)	.098(2.50)	.059(1.50)	—	
27	.156(3.96)	.118(3.00)	.098(2.50)	—	
28	.078(2.00)	.078(2.00)	.100(2.54)	—	
29	.142(3.60)	.098(2.50)	.039(1.00)	—	
30	.453(11.50)	.118(3.00)	.098(2.50)	—	
31	.319(8.10)	.110(2.80)	.100(2.54)	—	
32	.217(5.50)	.118(3.00)	.100(2.50)	—	
33	.394(10.00)	.118(3.00)	.098(2.50)	—	
34	.059(1.50)	.059(1.50)	.098(2.50)	—	
35	.512(13.00)	.157(4.00)	.098(2.50)	—	
36	.374(9.50)	.157(4.00)	.098(2.50)	—	
37	.358(9.10)	—	.100(2.54)	—	
38	.118(3.00)	.118(3.00)	.157(4.00)	—	
39	.118(3.00)	.157(4.00)	.098(2.50)	—	
40	.197(5.00)	.118(3.00)	.098(2.50)	—	
41	.295(7.50)	.165(4.20)	.100(2.54)	—	
42	.394(10.00)	.098(2.50)	.039(1.00)	—	
43	.217(5.50)	.098(2.50)	.039(1.00)	—	
44	.492(12.50)	.098(2.50)	.098(2.50)	—	
45	.295(7.50)	.098(2.50)	.098(2.50)	—	
46	.230(5.85)	.100(2.54)	.039(1.00)	—	



GENERAL TOLERANCES (UNLESS SPECIFIED)

APPROVE BY FRANK
DATE 25/JUN/13

PART NO. FPH25401-SXXSXXXXXXB

ITEM NO. FPH25401



DESIGN UNITS Inch (metric)

X.±.012(0.30) X:±5'

CHECKED BY CHERRY
DATE 25/JUN/13

TITLE Board to Board(Pin Header)
Pitch 2.54mm 180° Vertical(DIP)

REV 1 SHEET NO. 2/5

SCALE 5:1

SIZE A4

X.XX±.006(0.15) .XX±1'

DRAWN BY JACOB
DATE 25/JUN/13

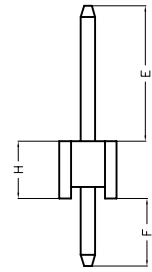
THIS DRAWING CONTAINS INFORMATION THAT IS PROPRIETARY TO TXGA INDUSTRIAL ELECTRONICS(S.Z)CO.,LTD AND SHOULD NOT BE USED WITHOUT WRITTEN PERMISSION

REV	LOCATIONS	DESCRIPTION	DATE	REVISER	APPD

Table1

Serial number	Dimensions(in/mm)			Canceled Circuits	Note
	E	F	H		
47	.421(10.70)	.118(3.00)	.098(2.50)	—	
48	.335(8.50)	.098(2.50)	.098(2.50)	—	
49	.256(6.50)	.098(2.50)	.098(2.50)	—	
50	.217(5.50)	.134(3.40)	.098(2.50)	No.6	Only 10Circuits
51	.787(20.0)	.118(3.00)	.098(2.50)	No.6	Only 14Circuits
52	.187(4.75)	.187(4.75)	.200(5.08)	No.2	Only 3Circuits
53	.187(4.75)	.187(4.75)	.200(5.08)	—	
54	.197(5.00)	.118(2.50)	.098(2.50)	—	
55	.197(10.00)	.118(2.54)	.100(2.54)	—	
56	.236(6.00)	.118(3.00)	.098(2.50)	No.2	Only 3, 5Circuits
57	.256(6.50)	.098(2.50)	.039(1.00)	No.2,4,6,8, 10,12	Only 13Circuits
58	.256(6.50)	.098(2.50)	.039(1.00)	No.2,4,6,8, 10,12,14	Only 15Circuits
59	.570(14.50)	.118(3.00)	.098(2.50)	—	
60	.197(5.00)	.122(3.00)	.118(3.00)	—	
61	.118(3.00)	.256(6.50)	.098(2.50)	—	
62	.256(6.50)	.118(3.00)	.098(2.50)	—	
63	.217(5.50)	.134(3.30)	.098(2.50)	—	
64	.476(12.10)	.134(3.30)	.098(2.50)	—	
65	.512(13.50)	.118(3.00)	.098(2.50)	—	
66	.118(3.00)	.886(22.50)	.098(2.50)	—	
67	.258(6.55)	.701(1.80)	.098(2.50)	—	
68	.230(5.84)	.200(5.08)	.098(2.50)	—	
69	.177(4.50)	.118(3.00)	.100(2.54)	—	
70	.197(10.00)	—	.098(2.50)	—	
71	.335(8.50)	.059(1.50)	.098(2.50)	—	

Serial number	Dimensions(in/mm)			Canceled Circuits	Note
	E	F	H		
72	.492(12.50)	.118(3.00)	.098(2.50)	—	
73	.343(8.70)	.118(3.00)	.098(2.50)	—	
74	.079(2.00)	.205(5.20)	.079(2.00)	—	
75	.177(4.50)	.138(3.50)	.098(2.50)	—	
76	.787(20.0)	—	.098(2.50)	—	
77	.138(3.50)	.138(3.50)	.098(2.50)	—	
78	1.043(26.50)	.118(3.00)	.098(2.50)	—	
79	.335(8.50)	.118(3.00)	.098(2.50)	—	
80	.472(12.00)	.216(5.50)	.098(2.50)	—	
81	.169(4.30)	.079(2.00)	.098(2.50)	No.2,4,6	Only 7Circuits
82	.169(4.30)	.079(2.00)	.098(2.50)	No.2,4,6,8,10	Only 11Circuits
83	.142(3.60)	.094(2.40)	.098(2.50)	No.3	Only 5Circuits
84	.142(3.60)	.094(2.40)	.098(2.50)	No.2,4	Only 5Circuits
85	.173(4.40)	.118(3.00)	.098(2.50)	—	
86	.282(7.16)	.118(3.00)	.098(2.50)	—	
87	.098(2.50)	.197(5.00)	.100(2.54)	—	
88	.177(4.50)	.118(3.00)	.059(1.50)	—	
89	.118(3.00)	.118(3.00)	.039(1.00)	—	
90	.197(5.00)	.118(3.00)	.039(1.00)	—	
91	.118(3.00)	.059(1.50)	.098(2.50)	—	

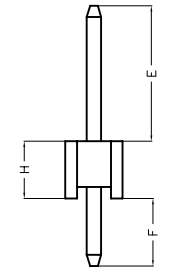


<p>THIRD ANGLE PROJECTION</p>	GENERAL TOLERANCES (UNLESS SPECIFIED)		APPROVE BY	DATE	PART NO.	ITEM NO.	<p>Leader Of Industry</p>
	X.±.012(0.30)	X:±5'	FRANK	25/JUN/13	FPH25401-SXXSXXXXXXB	FPH25401	
	X.X±.008(0.20)	.X'±2'	CHECKED BY	DATE	TITLE Board to Board(Pin Header) Pitch 2.54mm 180° Vertical(DIP)		
	X.XX±.006(0.15)	.XX'±1'	CHERRY	25/JUN/13	REV 1	SHEET NO. 3/5	
SCALE 5:1	SIZE A4	X.XXX±.004(0.10)	.XX'±0.5'	DRAWN BY	DATE	THIS DRAWING CONTAINS INFORMATION THAT IS PROPRIETARY TO TXGA INDUSTRIAL ELECTRONICS(S.Z)CO.,LTD AND SHOULD NOT BE USED WITHOUT WRITTEN PERMISSION	
			JACOB	25/JUN/13			

REV	LOCATIONS	DESCRIPTION	DATE	REVISER	APPD

Table1



Serial number	Dimensions(in/mm)			Canceled Circuits	Note
	E	F	H		
92	.236(6.00)	.118(3.00)	.098(2.50)	No.2,3,4,5,6	Only 7Circuits
93	.236(6.00)	.118(3.00)	.098(2.50)	No.3	Only 4Circuits
94					
95					
96	.276(7.00)	.118(3.00)	.098(2.50)	——	
97	.118(3.00)	.236(6.00)	.118(3.00)	——	
98	.236(6.00)	.118(3.00)	.079(2.00)	——	
99	.258(6.55)	.701(1.80)	.098(2.50)	No.2,3,4	Only 5Circuits
A1	.230(5.84)	.100(2.54)	.100(2.54)	No.2,4,6	Only 7Circuits
A2	.039(1.00)	.118(3.00)	.098(2.50)	——	
A3	.236(6.00)	.138(3.50)	.098(2.50)	——	
A4	.177(4.50)	.071(1.80)	.079(2.00)	——	
A5	.433(11.00)	.118(3.00)	.098(2.50)	——	
A6	.827(21.00)	.256(6.50)	.098(2.50)	No.2	Only 3Circuits
A7	.209(5.30)	.071(1.80)	.079(2.00)	——	
A8	.108(2.75)	.108(2.75)	.098(2.50)	——	
A9	.200(5.08)	.095(2.41)	.100(2.54)	——	
B1	.118(3.00)	.098(2.50)	.039(1.00)	——	
B2	.240(6.10)	.098(2.50)	.100(2.54)	——	
B3	.138(3.50)	.098(2.50)	.059(1.50)	——	
B4	.268(6.80)	.130(3.30)	.098(2.50)	——	



<p>THIRD ANGLE PROJECTION</p>	GENERAL TOLERANCES (UNLESS SPECIFIED)		APPROVE BY	DATE	PART NO.	ITEM NO.	<p>Leader Of Industry</p>
	X.±.012(0.30)	X:±5'	FRANK	25/JUN/13	FPH25401-SXXSXXXXXXB	FPH25401	
	X.X±.008(0.20)	.X'±2'	CHECKED BY	DATE	TITLE		
	X.XX±.006(0.15)	.XX±1'	CHERRY	25/JUN/13	Board to Board(Pin Header) Pitch 2.54mm 180° Vertical(DIP)		
SCALE	SIZE	X.XXX±.004(0.10)	.XXX±0.5'	DRAWN BY	DATE	THIS DRAWING CONTAINS INFORMATION THAT IS PROPRIETARY TO TXGA INDUSTRIAL ELECTRONICS(S.Z)CO.,LTD AND SHOULD NOT BE USED WITHOUT WRITTEN PERMISSION	
5:1	A4			JACOB	25/JUN/13	REV 1	SHEET NO. 4/5

REV	LOCATIONS	DESCRIPTION	DATE	REVISER	APPD

Circuits (n)	Part No.	Dimensions(in/mm)		Circuits (n)	Part No.	Dimensions(in/mm)	
		A	B			A	B
1	FPH25401-S01SXXXXXXB	—	.100(2.54)	21	FPH25401-S21SXXXXXXB	2.000(50.80)	2.100(53.34)
2	FPH25401-S02SXXXXXXB	.100(2.54)	.200(5.08)	22	FPH25401-S22SXXXXXXB	2.100(53.34)	2.200(55.88)
3	FPH25401-S03SXXXXXXB	.200(5.08)	.300(7.62)	23	FPH25401-S23SXXXXXXB	2.200(55.88)	2.300(58.42)
4	FPH25401-S04SXXXXXXB	.300(7.62)	.400(10.16)	24	FPH25401-S24SXXXXXXB	2.300(58.42)	2.400(60.96)
5	FPH25401-S05SXXXXXXB	.400(10.16)	.500(12.70)	25	FPH25401-S25SXXXXXXB	2.400(60.96)	2.500(63.50)
6	FPH25401-S06SXXXXXXB	.500(12.70)	.600(15.24)	26	FPH25401-S26SXXXXXXB	2.500(63.50)	2.600(66.04)
7	FPH25401-S07SXXXXXXB	.600(15.24)	.700(17.78)	27	FPH25401-S27SXXXXXXB	2.600(66.04)	2.700(68.58)
8	FPH25401-S08SXXXXXXB	.700(17.78)	.800(20.32)	28	FPH25401-S28SXXXXXXB	2.700(68.58)	2.800(71.12)
9	FPH25401-S09SXXXXXXB	.800(20.32)	.900(22.86)	29	FPH25401-S29SXXXXXXB	2.800(71.12)	2.900(73.66)
10	FPH25401-S10SXXXXXXB	.900(22.86)	1.000(25.40)	30	FPH25401-S30SXXXXXXB	2.900(73.66)	3.000(76.20)
11	FPH25401-S11SXXXXXXB	1.000(25.40)	1.100(27.94)	31	FPH25401-S31SXXXXXXB	3.000(76.20)	3.100(78.74)
12	FPH25401-S12SXXXXXXB	1.100(27.94)	1.200(30.48)	32	FPH25401-S32SXXXXXXB	3.100(78.74)	3.200(81.28)
13	FPH25401-S13SXXXXXXB	1.200(30.48)	1.300(33.02)	33	FPH25401-S33SXXXXXXB	3.200(81.28)	3.300(83.82)
14	FPH25401-S14SXXXXXXB	1.300(33.02)	1.400(35.56)	34	FPH25401-S34SXXXXXXB	3.300(83.82)	3.400(86.36)
15	FPH25401-S15SXXXXXXB	1.400(35.56)	1.500(38.10)	35	FPH25401-S35SXXXXXXB	3.400(86.36)	3.500(88.90)
16	FPH25401-S16SXXXXXXB	1.500(38.10)	1.600(40.64)	36	FPH25401-S36SXXXXXXB	3.500(88.90)	3.600(91.44)
17	FPH25401-S17SXXXXXXB	1.600(40.64)	1.700(43.18)	37	FPH25401-S37SXXXXXXB	3.600(91.44)	3.700(93.98)
18	FPH25401-S18SXXXXXXB	1.700(43.18)	1.800(45.72)	38	FPH25401-S38SXXXXXXB	3.700(93.98)	3.800(96.52)
19	FPH25401-S19SXXXXXXB	1.800(45.72)	1.900(48.26)	39	FPH25401-S39SXXXXXXB	3.800(96.52)	3.900(99.06)
20	FPH25401-S20SXXXXXXB	1.900(48.26)	2.000(50.80)	40	FPH25401-S40SXXXXXXB	3.900(99.06)	4.000(101.60)

 THIRD ANGLE PROJECTION	GENERAL TOLERANCES (UNLESS SPECIFIED)		APPROVE BY FRANK	DATE 25/JUN/13	PART NO. FPH25401-SXXSXXXXXXB	ITEM NO. FPH25401	 Leader Of Industry
	DESIGN UNITS Inch (metric)	X.±.012(0.30)	X.±5'	CHECKED BY CHERRY	DATE 25/JUN/13	TITLE Board to Board(Pin Header) Pitch 2.54mm 180° Vertical(DIP)	
SCALE 5:1	SIZE A4	X.XX±.006(0.15)	.XX±1'	DRAWN BY JACOB	DATE 25/JUN/13	THIS DRAWING CONTAINS INFORMATION THAT IS PROPRIETARY TO TXGA INDUSTRIAL ELECTRONICS(S.Z)CO.,LTD AND SHOULD NOT BE USED WITHOUT WRITTEN PERMISSION	
		X.XXX±.004(0.10)	.XXX±0.5'			REV 1	SHEET NO. 5/5